



Specification Sheet Model LB2 (DEDPV Certified)

Job Name: _____

Equipment Rep: _____

Contractor: _____

Tjernlund Contact: _____

Arch./Engr.: _____

Date: _____

Description:

The 2015 IRC restricts the use of dryer booster fans to those Certified to the DEDPV, Dryer Exhaust Duct Power Ventilator supplement to UL705 & CSA C22.2 #113-12. The LB2 maintains clothes dryer exhaust air velocities at proper levels when dryer exhaust duct lengths exceed dryer manufacturer recommendations. Suitable for up to 150 equivalent feet of duct.

Housing:

22 gauge G90 galvanized steel. Features rubber isolated mounting brackets which minimize vibration transfer.

Control:

Automatically activates fan based on operation of dryer. An LED indicator panel, mounted near the dryer, displays operational status and faults. It communicates via a factory-connected low voltage cable to an on-board booster fan control. The control monitors pressure and temperature within the duct to operate the booster fan in sync with the dryer and to stop booster fan operation if duct temperature is excessive or signal if the duct becomes blocked.

Material Handling Impeller:

The Lint Blitzer™ reverse inclined, particulate handling Impeller repels lint. 18 gauge G90 galvanized steel.

Motor:

PSC, permanently lubricated ball bearing motor is located outside the dryer exhaust air stream to prevent exposure to heat, lint and moisture.

Supply Power:

Six foot 115 VAC power cord factory installed and pre-wired. Requires installation adjacent to a standard electrical outlet.

Installation Notes:

Can be installed with discharge in horizontal or vertical orientations. Vertical orientations must discharge facing up.

Suitable for installation in ambient temperatures between: -20° F and 140° F (-29° C and 60° C). Suitable for dryer duct temperatures up to 167° F (75° C).

Warranty:

Five (5) year, no-clog guarantee & warranty

Typical Specification:

Dryer Exhaust Duct Power Ventilator (DEDPV) shall be Tjernlund Products LB2.

In the United States the DEDPV shall be Listed to ANSI/UL 705, including Supplement SA Dryer Exhaust Duct Power Ventilator (DEDPV) for single residential dryers. Installation must conform to 2015 IRC Section M1502.

In Canada the DEDPV shall be Listed to CSA C22.2#113: 2012/08/01 Ed: 9

The DEDPV shall have a (5) year material, workmanship and no-clog warranty.

The DEDPV shall have a galvanized steel, reverse inclined Impeller that will not clog with lint.

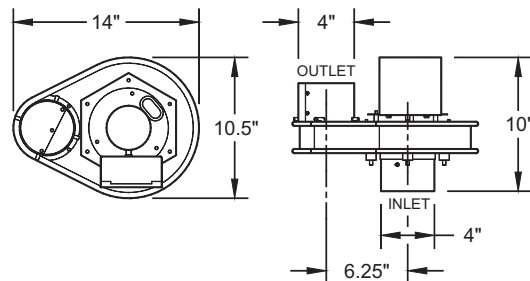
The motor of the DEDPV shall be located outside of the dryer exhaust air stream.

The DEDPV shall include a notification panel that indicates operational status and alerts user to duct blockage, fan malfunction or elevated exhaust duct temperature.

The DEDPV shall include a redundant one shot thermal fuse that can stop operation of the DEDPV independent of the controller's logic status.

Optional Equipment:

LT4 - 4" Secondary Dryer Lint Trap



Specifications:

MODEL LB2				
Volts	Amps	Watts	RPM	CFM
120	0.8	50	3000	160

